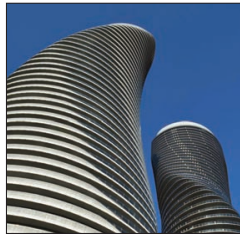


# In this issue/Dans ce numéro

1. From our president
1. De notre président
1. Social media team has room for more
1. Readers reply
2. Board shorts
2. Des Nouvelles Brèves du CA
3. Membership renewal
3. Renouvellement des Membres
4. Senders reply
5. Cartoon, by Mary Susan MacDonald
5. The Apollo Syndrome: Are Mensa Teams Doomed to Fail? by Vicki Herd
7. Transcription Treasures, by Nicky Kew
- 8-11. EMAG: Some reflections, by Leo Lehtiniemi
- 12-13. That lump-sum pension payout comes with real drawbacks, by Andrew Chong
13. Sudoku puzzle, from Timothy Wallis
14. Living with schizophrenia, by Peter Vanweerden
14. Lifetime achievement award, by Willem Bouwens
15. Le progrès manifeste, par Sébastien Cameron
15. A-Musings, by Sylvia Teaves
16. Give thanks, cryptic crossword, by Karen Thurber
16. Roblinyms, from Blair Roblin
17. Inviting Nominations for the International Election

18. Crossword — Norse mythology
- 18-19. Les mots croisés — La mythologie scandinave
19. Mensa Canada Puzzle Contest 2011-12 Winner
19. Le gagnant du concours de casse-tête de Mensa Canada 2011-12
- 20-21. Solutions
23. International Journal insert begins (16 pages)
24. Legends of the Falls AG registration form
25. Events
25. Événements
26. Mensa Canada Officials
26. Administrateurs de Mensa Canadas



Condo Living at The Monroes, by Patricia Heise of Mississauga, Ont., won first prize in the Canadian portion of the Mensa Photo Contest.



Vol. 45, no. 5, November 2012  
Vol. 45, no. 5, novembre 2012

**PUBLISHER/ÉDITEUR:** Mensa Canada  
**EDITOR/RÉDACTEUR:** Marjorie Bentley — editor@mensacanada.org  
**TRANSLATION/TRADUCTION:** Huguette Lamontagne  
**SUBSCRIPTIONS/ABONNEMENTS:** National office/Siège social  
**WEBMASTER/WEBMAÎTRE:** Mira Melian  
**ADVERTISING/PUBLICITÉ:** (Mensa reserves the right to refuse submissions. Mensa se réserve le droit de refuser des annonces.) **Classified/Petites annonces:** Personal, Want Ads, Products: \$10/col. inch, approximately 35 words. Petites annonces personnelles ou de produits: 10 \$ par pouce-colonne, environ 35 mots.  
**DISPLAY ADVERTISING/GRANDS ANNONCES:** \$50 per 1/6 page; contact Editor. 50\$ la sixième partie d'une page; communiquer avec le rédacteur (editor@mensacanada.org).  
**CONTACTING MNSA OFFICIALS/COMMENT JOINDRE LES ADMINISTRATEURS DE MNSA:** Editorial/Rédaction: All enquiries re MC<sup>2</sup>: contact the Editor. Toute question portant sur MC<sup>2</sup> devrait être adressée au rédacteur.  
**REVISED SUBMISSION GUIDELINES/NOUVELLES DIRECTIVES DE CONTRIBUTION:** Contributions are welcome from all members, although we must reserve the right to decline submissions according to Mensa policy on discrimination and legal principle. Pieces should be forwarded to the Editor at the indicated email or postal address. Some editing may be necessary to assure standards of formal presentation. Textes accueillis de tout membre; à noter que la direction se réserve le droit de refuser selon les politiques de Mensa concernant la discrimination et selon les principes juridiques. Faire parvenir les soumissions au rédacteur (voir les adresses ci-dessus). Les textes subissent peut-être de la révision afin d'assurer un niveau de présentation acceptable.  
**EDITORIAL DEADLINE/DATE DE TOMBÉE:** For the January issue, Nov. 15; for the March issue, Jan. 15; for the May issue, March 15; for the July issue, May 15; for the September

issue, July 15; for the November issue, Sept. 15. *Date de tombée: pour le numéro de janvier, le 15 novembre; pour le numéro de mars, le 15 janvier; pour le numéro de juillet, le 15 mai; pour le numéro de septembre, le 15 juillet; pour le numéro de novembre, le 15 septembre.*

**EDITORIAL POLICY/POLITIQUE DE LA RÉDACTION:** Mensa by its nature and constitution professes no opinions and is not affiliated in any way with any other organization. Views expressed in this publication are those of the writers and do not necessarily reflect the opinions of the Editor, of any other individual, or of the Mensa governing body. Editorial comment represents the opinion of the individual Editor. Neither the Editor nor Mensa Canada is responsible or liable in any way for any civil or criminal, financial or punitive, or any other form of damages arising from any aspect of the publication of MC<sup>2</sup>. Subscriptions are included in the annual membership fee; or, for non-members, the subscription rate is \$60 (Cdn) within Canada or \$60 (US) outside Canada. Enquiries should be directed to the National Office, including new address, old address and membership and/or previous mailing label. *De par sa nature et ses statuts, Mensa n'a aucune opinion et ne s'est affilié à aucun autre organisme. Les opinions exprimées dans MC<sup>2</sup> sont celles des auteurs et ne reflètent pas nécessairement celles de la rédaction, ni celles d'autres personnes, ni celles du conseil d'administration de Mensa. Les commentaires de la rédaction n'engagent que le signataire. Ni le rédacteur, ni Mensa Canada ne seront tenus responsables d'aucune façon d'aucun dommage civil ou criminel, financier ou punitif, ou aucun autre type de dommage, étant le résultat d'aucun aspect de la publication de MC<sup>2</sup>. Les abonnements sont compris dans les frais d'adhésion annuels; ou, pour les non-membres, l'abonnement coûte 60 \$ (monnaie canadienne) ou 60 \$ (monnaie américaine) à l'extérieur du Canada. Faites parvenir tout changement d'adresse au bureau des abonnements de Mensa à l'adresse précisée, en indiquant la nouvelle adresse, l'ancienne adresse, et le numéro de membre.*

**GENERAL INFORMATION/RENSEIGNEMENTS GÉNÉRAUX:** MC<sup>2</sup> (ISSN 0820-4217) is published bimonthly by Mensa Canada at 4 Cataragui St., Suite 310, Kingston, ON K7K 1Z7, 613-547-0824. Unless otherwise indicated by notice of copyright or other specific means, materials may be reprinted in other Mensa publications, providing credit is given to MC<sup>2</sup> and the author, and a copy of the periodical containing the article is forwarded to the MC<sup>2</sup> Editor upon publication. MC<sup>2</sup> (ISSN 0820-4217) est publié par Mensa Canada, 4 rue Cataragui, salle 310, Kingston, Ontario, K7K 1Z7, 613-547-0824. À moins d'indication contraire telles qu'un signe de copyright ou une autre indication précis, les autres publications de Mensa peuvent reproduire les textes et illustrations à condition d'en indiquer la provenance et l'auteur. Il faut aussi faire parvenir un exemplaire du journal publiant l'article en question au rédacteur de MC<sup>2</sup> au moment de la publication.

Continued from previous page

The article was a refreshingly candid piece of self-revelation, with a poignant portrayal of the anguish of a member of a segment of society that most of us prefer not to think about when she was pushed beyond the professional boundaries that she had set for herself and thereby forced into a confrontation with a side of herself that she preferred to believe did not exist.

Despite Frank's own assessment of the outcome, I suspect that he did a greater kindness to his Ghyslaine than he realizes since, although we may hate it at the time, being forced into a confrontation with a true self we do not want to acknowledge is where all emotional growth comes from.

It is never easy or painless, but once we have experi-

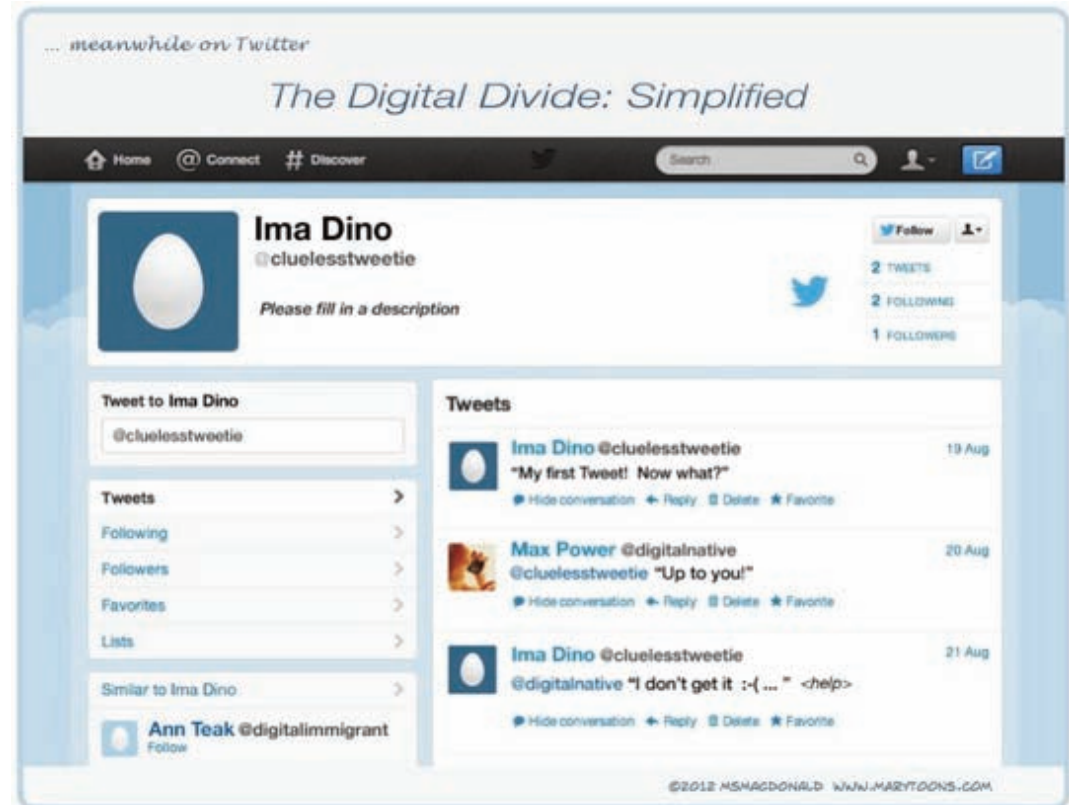
enced the liberation it bestows upon us, we never want to go back.

I know of no guaranteed way of making this happen, so that when it does it is likely to be serendipitous, but those of us who have been fortunate enough to have had such an experience wish we could bestow it upon everyone.

The editor needs to be commended for seeing the very real human value in this story and Frank needs to be commended for having the courage to write about it in a public forum.

Had I been in Frank's place, I doubt I would have had the courage to discuss it in such an open manner.

Don Graham  
New Westminster BC



Note to Geeks and Pusters: Read carefully! This cartoon is loaded!

Mary Susan MacDonald